

Installing a Turnkey Linux Appliance

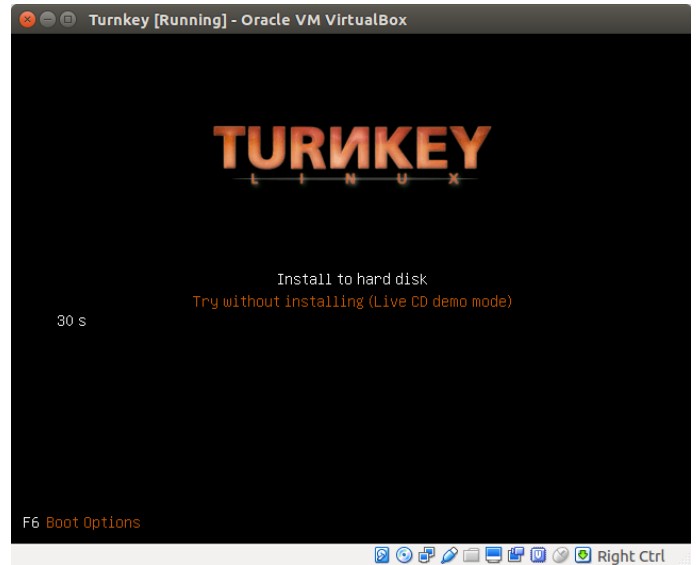
Download the ISO image of your selected Turnkey Appliance and either burn to CD or write to a USB memory stick. Boot the system you want to use as the appliance from the CD or USB stick.

When the Turnkey boot screen appears, press **return** to go ahead and install the Turnkey system to the hard drive. This will totally replace anything currently on the hard drive.

Important!

In the following Turnkey install screens, use **up / down** cursor keys to move between options, and the **TAB** key to move between the options and the **<OK>** and **<Cancel>** or other action buttons.

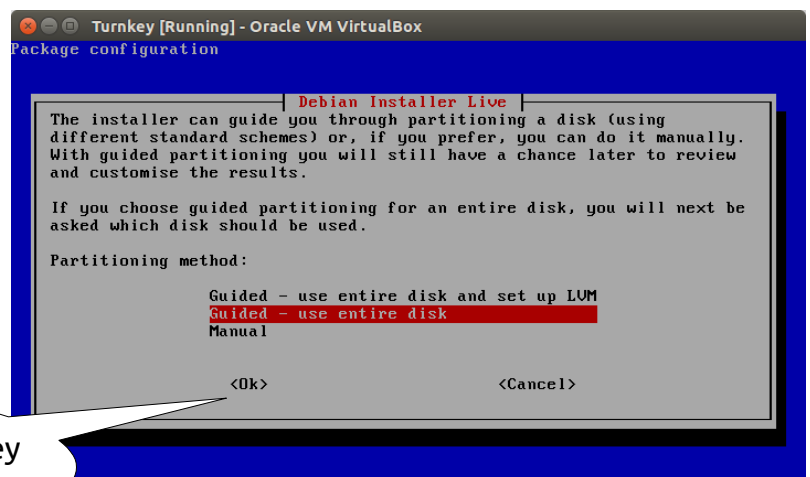
With the required action highlighted, press the **return** key to go to next step.



Choose the install method:

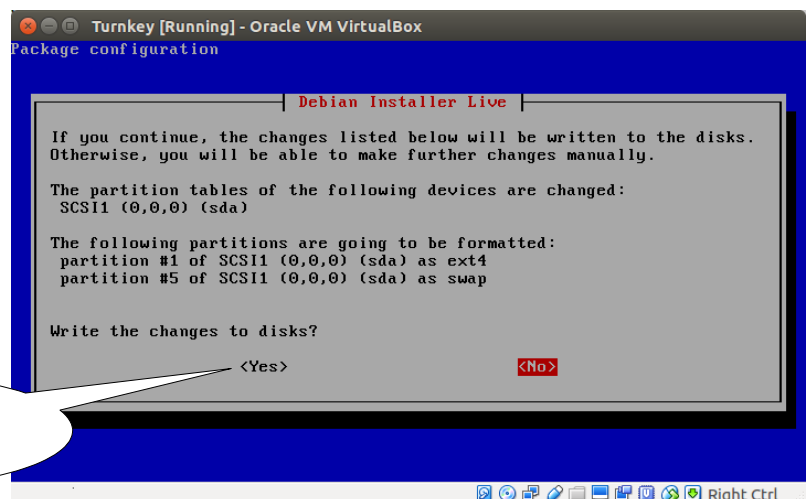
Guided - use entire disk

(unless you know you need a different option).



Move to **<OK>** using the **TAB** key and press **return** to confirm

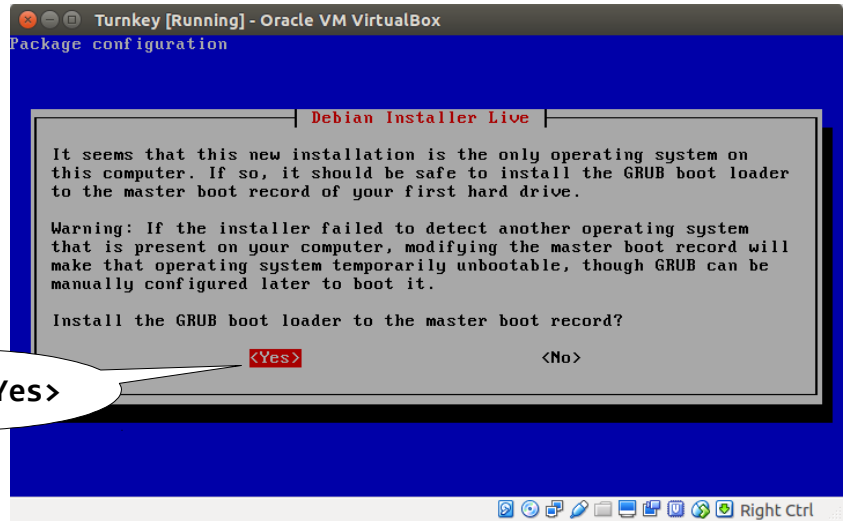
When asked to confirm, make sure to use the **TAB** key to highlight **<Yes>** before pressing the **return** key to continue.



Choose **<Yes>** to confirm

After the system files have been copied, confirm you want to install the GRUB boot loader.

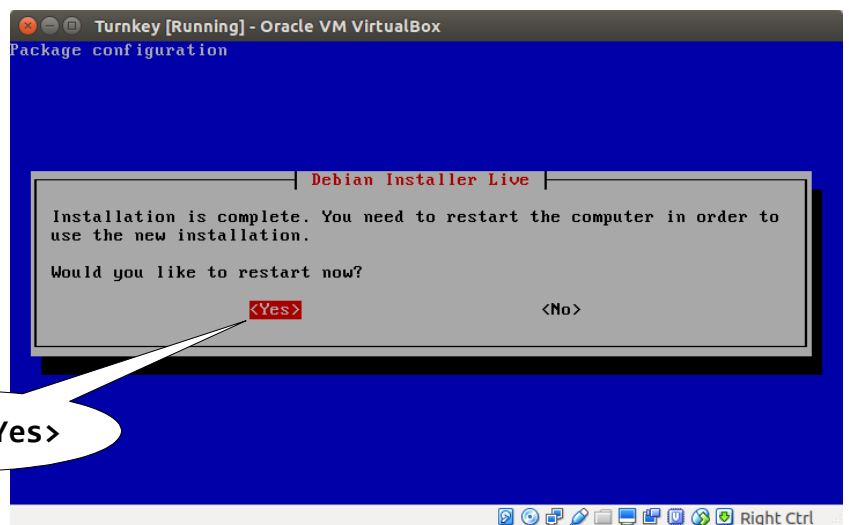
Choose <Yes>



Choose to restart the system when prompted.

The system will reboot.

Choose <Yes>

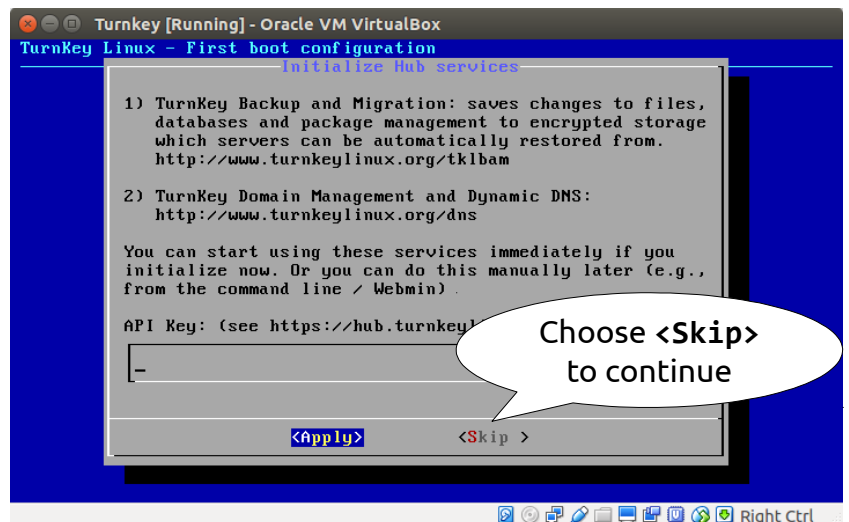


After restarting, you will be prompted to provide passwords for the root login and for the root MySQL database user. Both passwords are case-sensitive. For a system that is not live to the Internet, using the same password for both is fine. On a live system it would be more secure to use different passwords.

You will be prompted for your key for the Turnkey web services.

Press the TAB key and highlight <Skip> to continue without configuring this option.

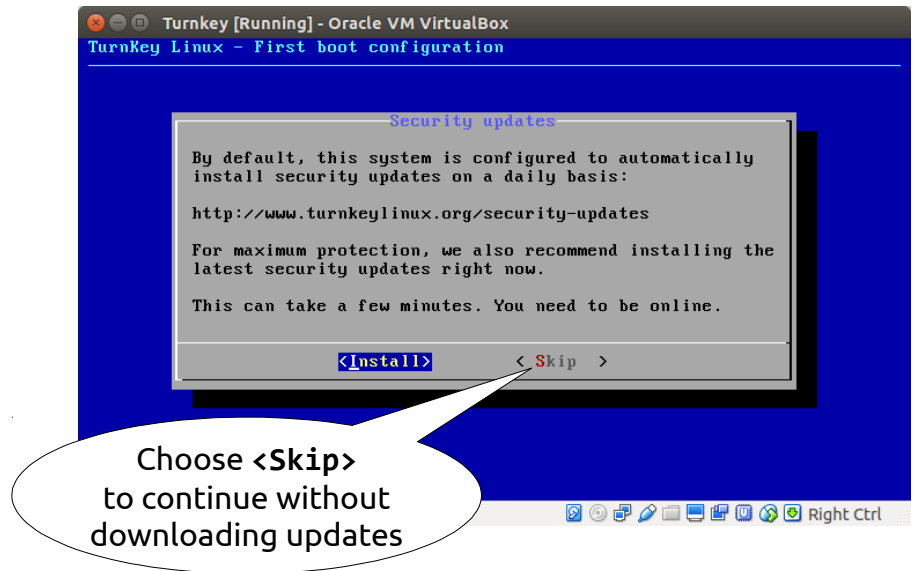
Choose <Skip> to continue



Generally you would want to install the software updates. This can take several minutes.

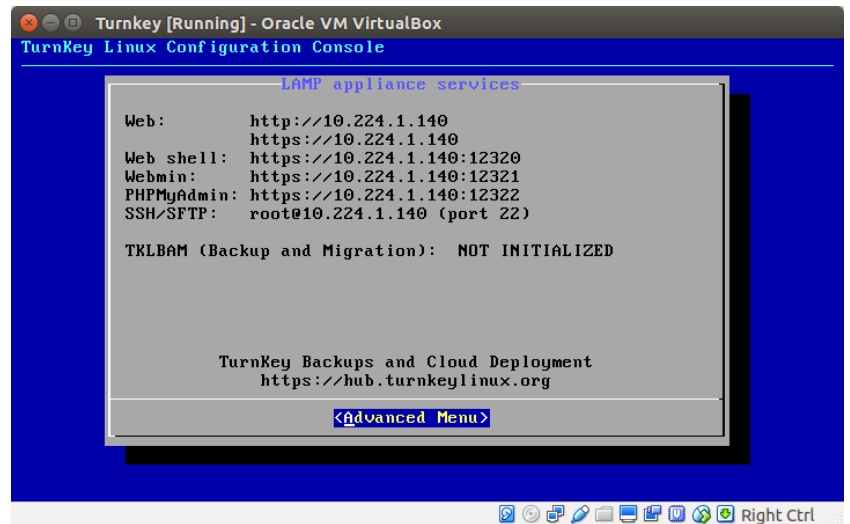
If you are just trying out the appliance, you can save time and skip this step.

(You can update the system at a later time if you decide you need to do so.)

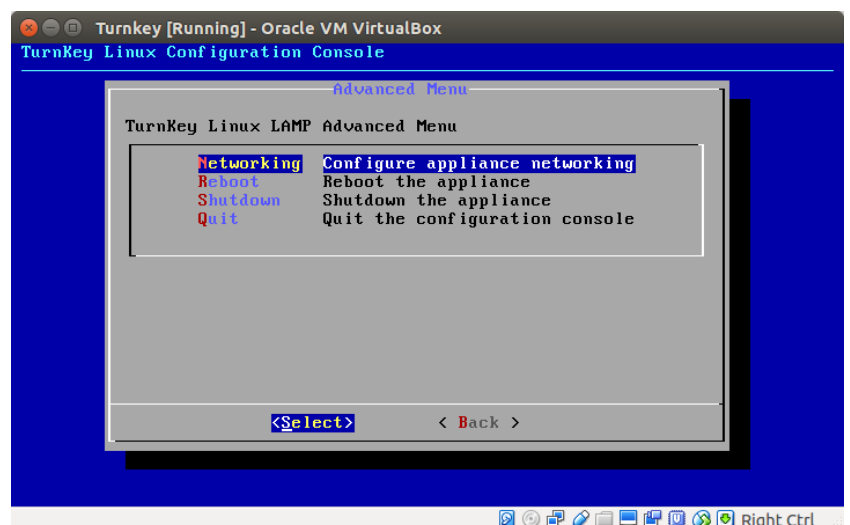


The Turnkey appliance is now running. It will have used DHCP (if available) to establish its network address.

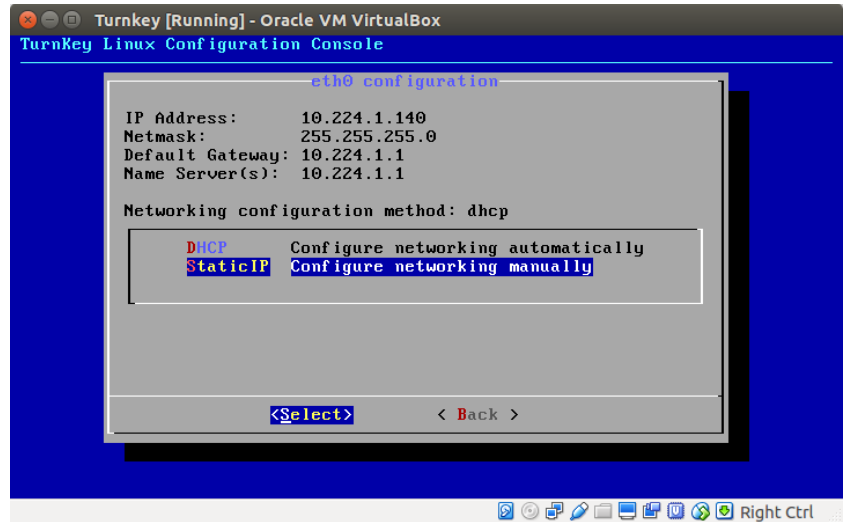
To configure a static IP address (recommended) go to the Advanced Menu.



Highlight **Networking** and press return to configure a static IP address.

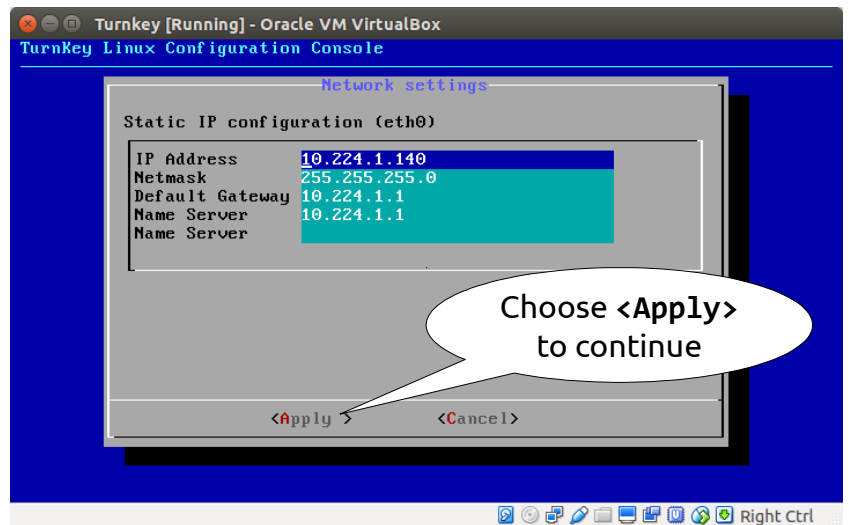


Select the option to configure a Static IP ...

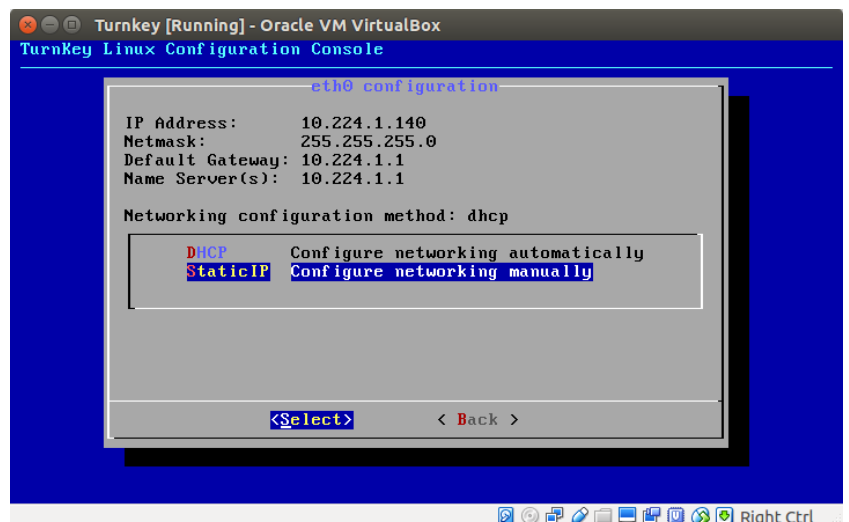


... and edit the settings as required.

The new settings will come into effect straight away after you select <Apply>.



Choose <Back> to return to the Advanced Menu.



Shutting down Turnkey Linux

It is always recommended to use a proper shutdown procedure rather than just removing the power!

If you had a keyboard and monitor on the Turnkey Appliance, use the **Shutdown** option from the Advanced Menu.

If you are running the Turnkey Appliance “headless” (ie with no monitor and keyboard) you have a number of other options:

Terminal connection

Use a terminal to open a connection to the server. For example, open any Linux terminal app and type

```
ssh -l root ip.address.of.turnkey
```

When connected (after providing the **root** password for the Turnkey server) type the command

```
halt -p
```

Web shell connection

Use a web browser to connect to the address of the Web shell. In a default installation this is

```
https://ip.address.of.turnkey:12320/
```

Login as **root** with your password,

After logging in, type the command

```
halt -p
```

Using Webmin

Use a web browser to connect to the address of the **Webmin** service. In a default installation this is

```
https://ip.address.of.turnkey:12321/
```

Login as **root** with your password.

Choose **Bootup** and **Shutdown** from the opening menus screen.

In the **Bootup** and **Shutdown** screen, scroll to the bottom of the page and click on **Shutdown System**.

A further page will ask you to confirm before shutting down the Turnkey appliance.