

Installing A Turnkey Linux Appliance as a VirtualBox VM

Preparation

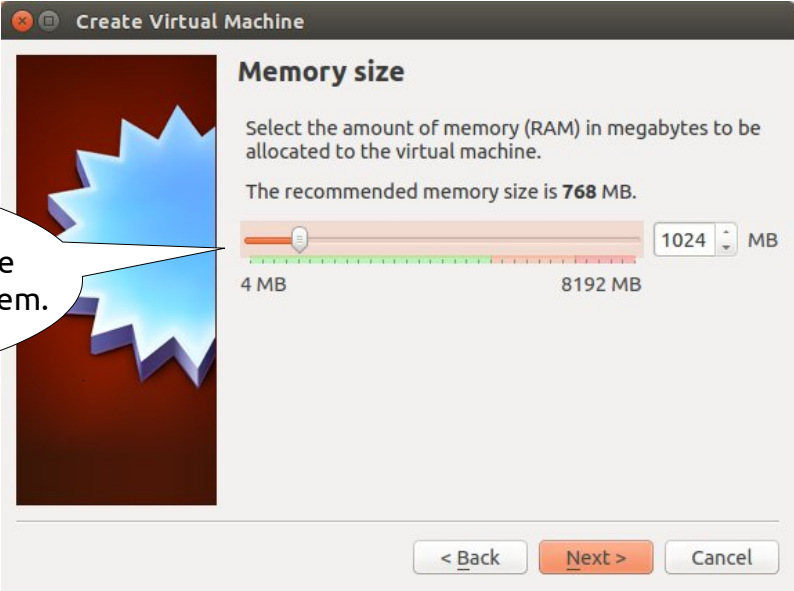
In VirtualBox Manager, click **Start** to create a new VM.

Set Name: (your choice)
Type: Linux
Version: Debian (64-bit)

Note: If You choose a 32-bit OS, you will need to set the option for PAE support in the VM settings under System → Processor at the configuration stage (unless you know you are using a non-PAE kernel).

1024MB of memory should be enough for a development system.

Use the default to create a virtual drive, unless you know you want something different.



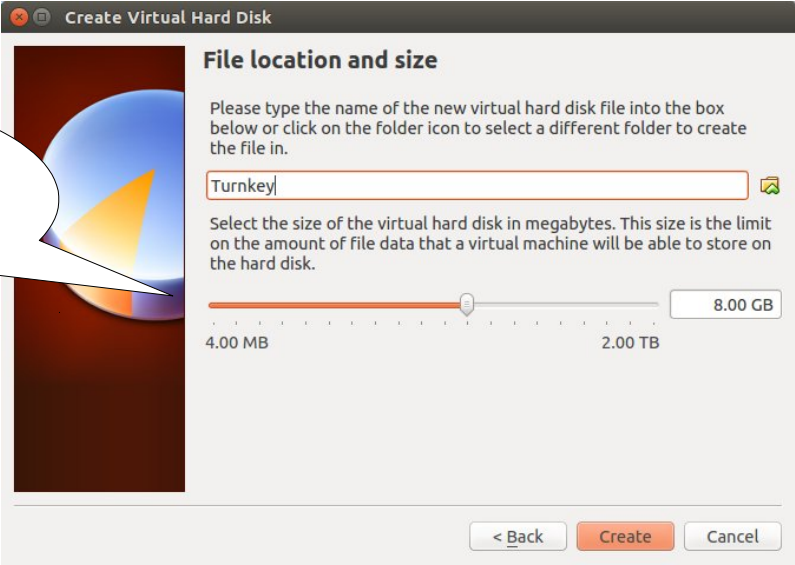
Use the default to create a VDI drive, unless you know you want something different.



Stick with the default of Dynamically allocated, unless you know you want something different.



The default of 8.0GB is probably enough, but allocate more if you think you'll need it.

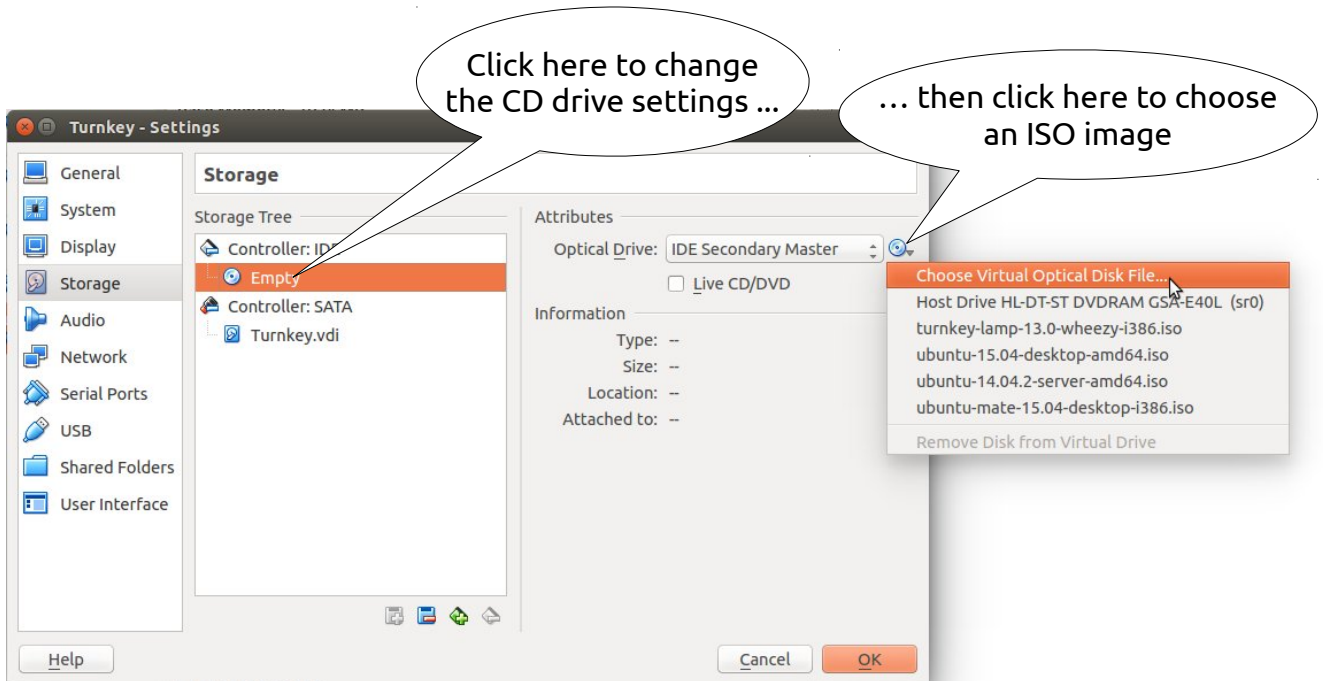


Configuring the VM

After the wizard for creating the new VM has completed, click on **Settings** in the VirtualBox manager and make some configuration changes...

1. Choose the ISO image of the install CD

In the Storage section, click on the CD icon (which will show "Empty") and then choose the ISO image of the Turnkey Appliance you want to install.



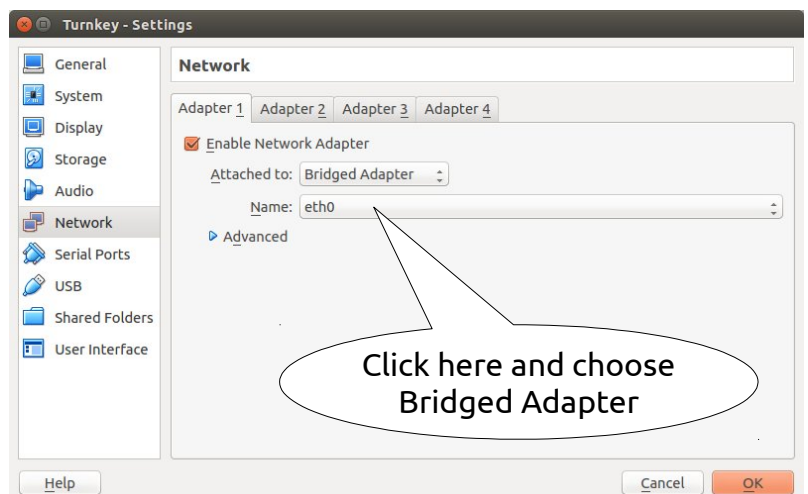
On the drop-down menu, click **Choose Virtual Optical Disk File...** and find the ISO image you want to use. (Recently used or downloaded ISO images will be shown in the drop-down menu.)

Once the Turnkey Appliance has been installed as a VM you no longer need the ISO image.

2. Change the Network Setting

In the Network section, change the setting so the VM uses a Bridged Adapter. This will let the VM get it's settings via DHCP from your network, or allow you to set a static IP on your network.

Unless it's bridged to the local network, the VM will not be accessible from other computers on the network.



3. If necessary, enable PAE support

Many current 32-bit ISO images use a Linux OS kernel that needs PAE (Physical Address Extension) support.

If using a 32-bit image, tick **Enable PAE/NX** on the **Processor** tab in the **System** section.

Note: PAE allows more recent 32-bit x86 processors to access more than 4GB of memory, and many Linux distributions are compiled to expect PAE to be available and will not load if it is not detected. Not all x86 processors provide PAE support. If you have an older processor which does not have PAE support, you will need to find a distribution with a “non-PAE” Linux kernel.

Installing the Turnkey Appliance

Click on **Start** in the VirtualBox manager to boot the VM. The ISO image you have chosen will be loaded.

After the VirtualBox startup screen, the Turnkey boot screen will appear.

Press **return** to go ahead and install the Turnkey system to the VM.

Refer to the Turnkey Linux Appliance installation notes for detailed instructions on how to complete the installation.